



NORTHEAST-MIDWEST
STATE FORESTERS
ALLIANCE

Urban & Community Forestry Committee

URBAN FORE\$TRY FACTS

MISSOURI



ECONOMIC SECTORS

PRIVATE SECTOR

INVESTOR-OWNED UTILITIES

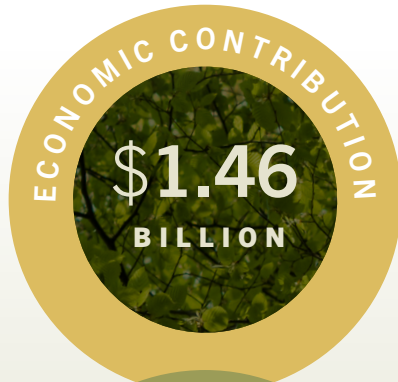
MUNICIPAL GOVERNMENT

COUNTY GOVERNMENT

STATE AGENCY

HIGHER EDUCATION INSTITUTIONS

NON-PROFIT ORGANIZATIONS

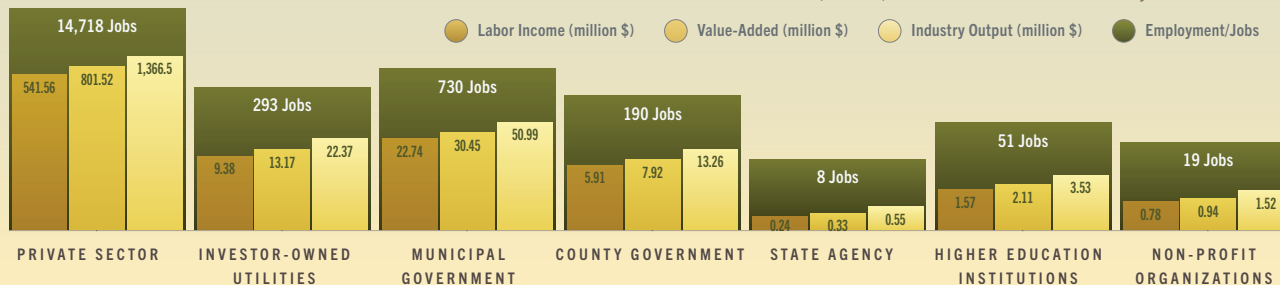


WITH EVERY
DOLLAR GENERATED
IN URBAN FORESTRY
\$0.66
WAS ADDED
TO THE STATE

WITH EVERY JOB
IN URBAN FORESTRY
0.34 jobs
WERE ADDED IN OTHER
ECONOMIC SECTORS

TOTAL EFFECT ECONOMIC CONTRIBUTION OF URBAN FORESTRY*

**Total Economic Contribution is the sum of direct, indirect, and induced effects of urban forestry activities.*





NORTHEAST-MIDWEST
**STATE FORESTERS
ALLIANCE**

Urban & Community Forestry Committee



DIRECT TAX CONTRIBUTION
OF URBAN FORESTRY

\$33.8
MILLION

**STATE & LOCAL
TAX CONTRIBUTION
FEDERAL**

\$76.9
MILLION



20.7%

OF MISSOURI COMMUNITY LAND
IS COVERED BY CANOPY



70%
OF MISSOURI'S
POPULATION LIVE
WITHIN URBAN
FORESTS

**VALUE OF
ECOSYSTEM SERVICES**

\$129.2
million/year

\$47.8 MILLION FROM THE
REMOVAL OF AIR POLLUTANTS

\$30.4 MILLION FROM THE
REDUCTION OF STORMWATER

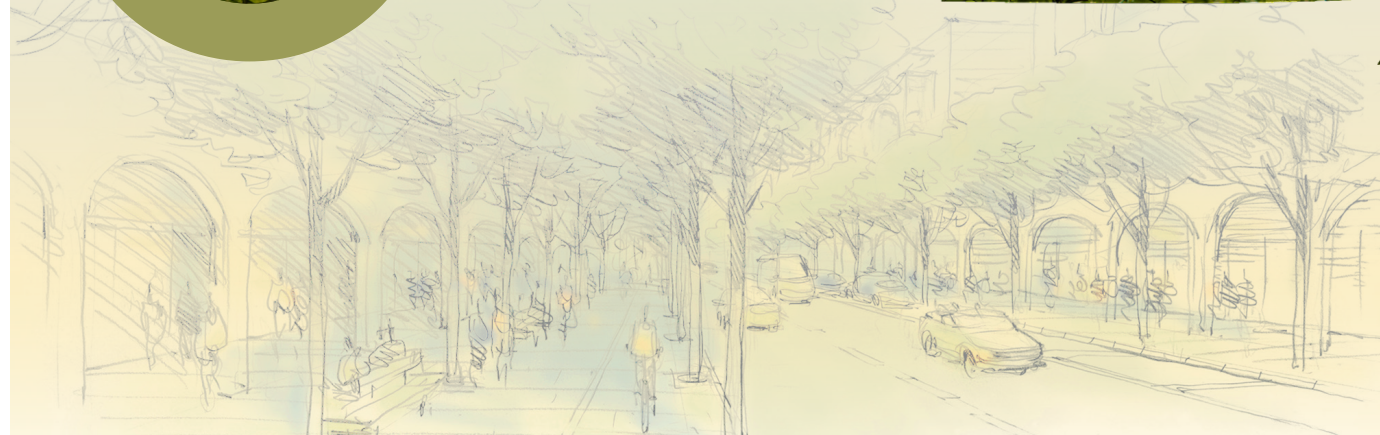
\$51.0 MILLION FROM THE
SEQUESTRATION OF CARBON

DIRECT ECONOMIC EFFECT

\$880
MILLION

DIRECTLY IN INDUSTRY

TOTAL JOBS
11,945



This project was made possible by a grant from the USDA Forest Service, an equal opportunity provider, employer, and lender.

Please visit <http://www.nmsfa.org> to view online or download a copy of the full report.



**NC STATE
UNIVERSITY**