



NORTHEAST-MIDWEST  
STATE FORESTERS  
ALLIANCE

Urban & Community Forestry Committee

# URBAN FORE\$TRY FACTS

## MINNESOTA



### ECONOMIC SECTORS

#### PRIVATE SECTOR

#### INVESTOR-OWNED UTILITIES

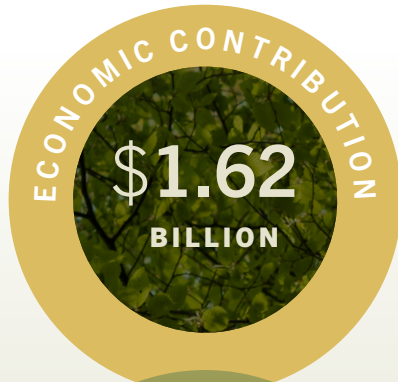
#### MUNICIPAL GOVERNMENT

#### COUNTY GOVERNMENT

#### STATE AGENCY

#### HIGHER EDUCATION INSTITUTIONS

#### NON-PROFIT ORGANIZATIONS

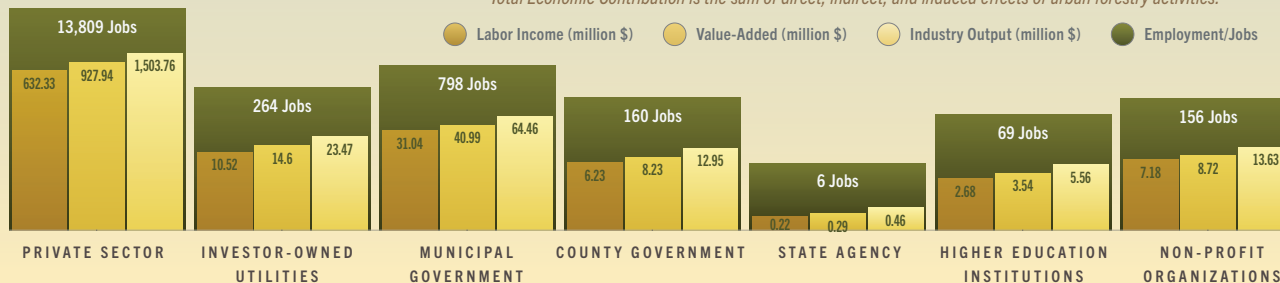


WITH EVERY  
DOLLAR GENERATED  
IN URBAN FORESTRY  
**\$0.70**  
WAS ADDED  
TO THE STATE

WITH EVERY JOB  
IN URBAN FORESTRY  
**0.38 jobs**  
WERE ADDED IN OTHER  
ECONOMIC SECTORS

### TOTAL EFFECT ECONOMIC CONTRIBUTION OF URBAN FORESTRY\*

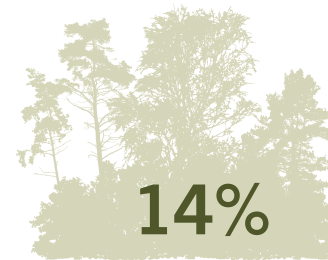
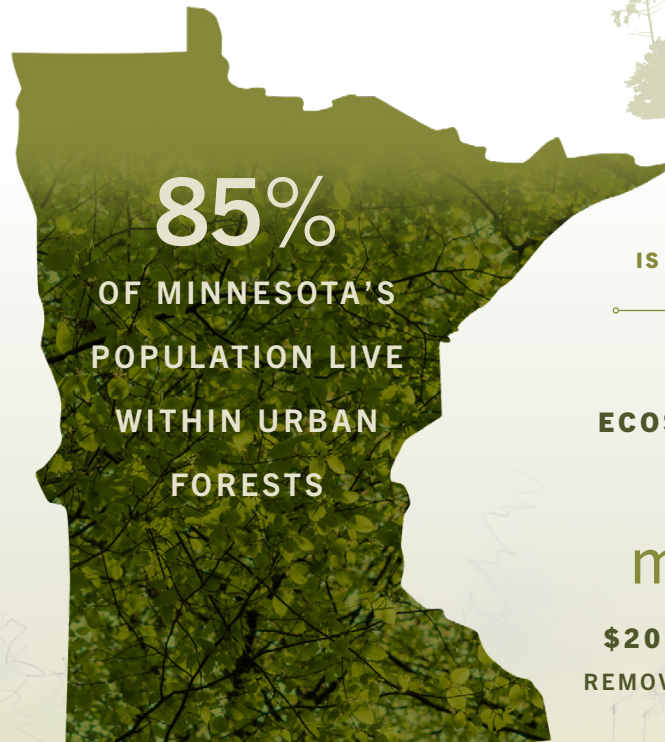
*\*Total Economic Contribution is the sum of direct, indirect, and induced effects of urban forestry activities.*





NORTHEAST-MIDWEST  
**STATE FORESTERS  
ALLIANCE**

Urban & Community Forestry Committee



OF MINNESOTA'S  
COMMUNITY LAND  
IS COVERED BY CANOPY

VALUE OF  
ECOSYSTEM SERVICES

**\$81.2  
million/year**

**\$20.2** MILLION FROM THE  
REMOVAL OF AIR POLLUTANTS

**\$17.6** MILLION FROM THE  
REDUCTION OF STORMWATER

**\$43.4** MILLION FROM THE  
SEQUESTRATION OF CARBON



**DIRECT TAX CONTRIBUTION  
OF URBAN FORESTRY**



**STATE & LOCAL  
TAX CONTRIBUTION  
FEDERAL**



*This project was made possible by a grant from the USDA Forest Service, an equal opportunity provider, employer, and lender.*

Please visit <http://www.nmsfa.org> to view online or download a copy of the full report.

