



NORTHEAST-MIDWEST
STATE FORESTERS
ALLIANCE

Urban & Community Forestry Committee

URBAN FORE\$TRY FACTS

MASSACHUSETTS



ECONOMIC SECTORS

PRIVATE SECTOR

INVESTOR-OWNED UTILITIES

MUNICIPAL GOVERNMENT

COUNTY GOVERNMENT

STATE AGENCY

HIGHER EDUCATION INSTITUTIONS

NON-PROFIT ORGANIZATIONS



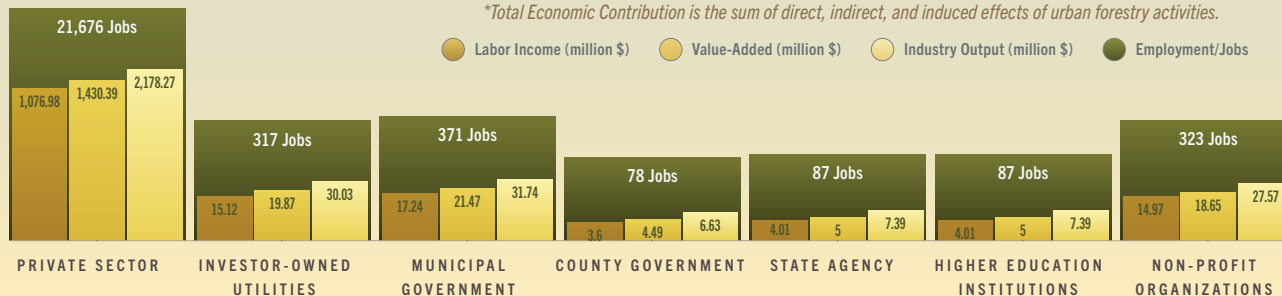
WITH EVERY
DOLLAR GENERATED
IN URBAN FORESTRY
\$0.66
WAS ADDED
TO THE STATE

WITH EVERY JOB
IN URBAN FORESTRY
0.32 jobs
WERE ADDED IN OTHER
ECONOMIC SECTORS

TOTAL EFFECT ECONOMIC CONTRIBUTION OF URBAN FORESTRY*

**Total Economic Contribution is the sum of direct, indirect, and induced effects of urban forestry activities.*

● Labor Income (million \$) ● Value-Added (million \$) ● Industry Output (million \$) ● Employment/Jobs





NORTHEAST-MIDWEST
**STATE FORESTERS
ALLIANCE**

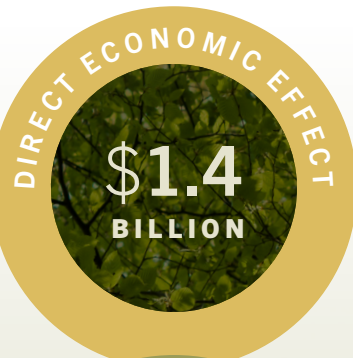
Urban & Community Forestry Committee

39%

**OF MASSACHUSETTS' COMMUNITY LAND
IS COVERED WITH CANOPY**



**DIRECT TAX CONTRIBUTION
OF URBAN FORESTRY**



70%
**OF MASSACHUSETTS POPULATION
LIVE WITHIN URBAN FORESTS**



VALUE OF ECOSYSTEM SERVICES
\$244.5 million/year

\$106.9 MILLION
FROM THE REMOVAL OF AIR POLLUTANTS

\$59.4 MILLION
FROM THE REDUCTION OF STORMWATER

\$78.2 MILLION
FROM THE SEQUESTRATION OF CARBON

**STATE & LOCAL
TAX CONTRIBUTION
FEDERAL**



This project was made possible by a grant from the USDA Forest Service, an equal opportunity provider, employer, and lender.

Please visit <http://www.nmsfa.org> to view online or download a copy of the full report.

