



NORTHEAST-MIDWEST  
STATE FORESTERS  
ALLIANCE

Urban & Community Forestry Committee

# URBAN FORE\$TRY FACTS

## ILLINOIS



### ECONOMIC SECTORS

#### PRIVATE SECTOR

#### INVESTOR-OWNED UTILITIES

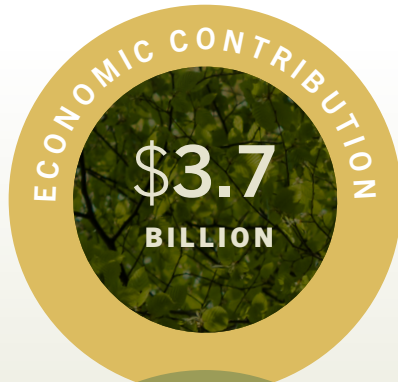
#### MUNICIPAL GOVERNMENT

#### COUNTY GOVERNMENT

#### STATE AGENCY

#### HIGHER EDUCATION INSTITUTIONS

#### NON-PROFIT ORGANIZATIONS



WITH EVERY  
DOLLAR GENERATED  
IN URBAN FORESTRY

**\$0.72**

WAS ADDED  
TO THE STATE

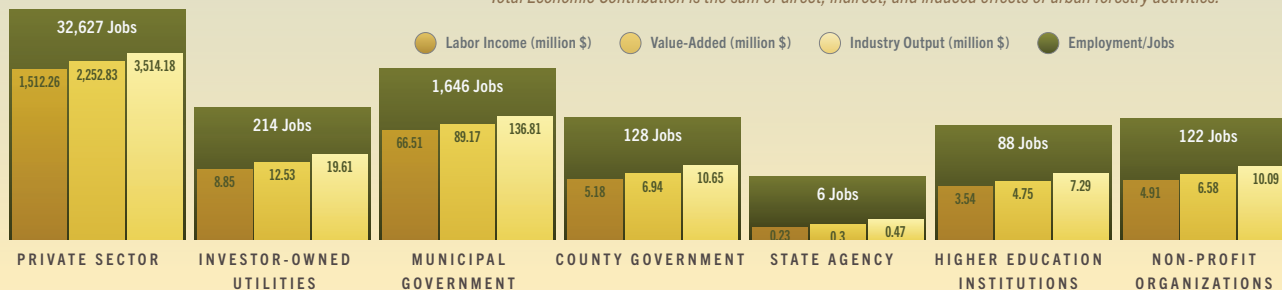
WITH EVERY JOB  
IN URBAN FORESTRY

**0.37 jobs**

WERE ADDED IN OTHER  
ECONOMIC SECTORS

### TOTAL EFFECT ECONOMIC CONTRIBUTION OF URBAN FORESTRY\*

*\*Total Economic Contribution is the sum of direct, indirect, and induced effects of urban forestry activities.*





NORTHEAST-MIDWEST  
**STATE FORESTERS  
ALLIANCE**

Urban & Community Forestry Committee



**17.4%**

OF ILLINOIS COMMUNITY LAND  
IS COVERED BY CANOPY

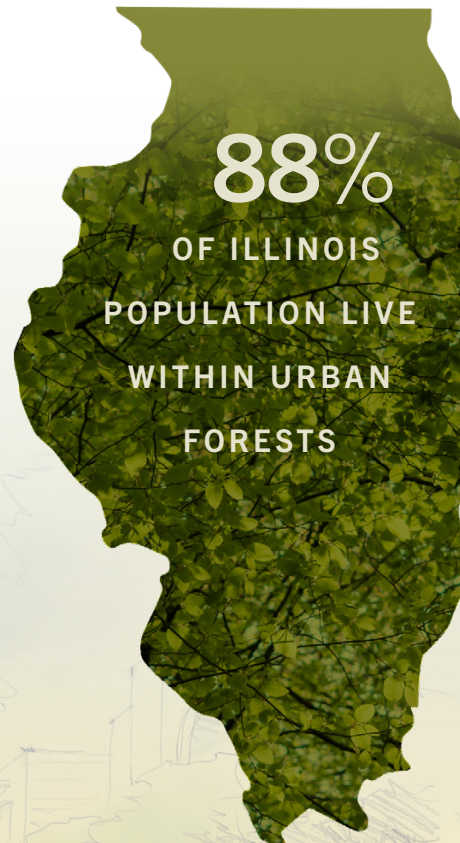
VALUE OF  
ECOSYSTEM SERVICES

**\$288.8**  
million/year

**\$158.5** MILLION FROM THE  
REMOVAL OF AIR POLLUTANTS

**\$69.0** MILLION FROM THE  
REDUCTION OF STORMWATER

**\$61.3** MILLION FROM THE  
SEQUESTRATION OF CARBON



**88%**

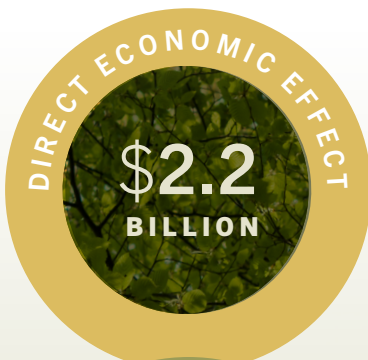
OF ILLINOIS  
POPULATION LIVE  
WITHIN URBAN  
FORESTS



**DIRECT TAX CONTRIBUTION**  
OF URBAN FORESTRY



**STATE & LOCAL**  
TAX CONTRIBUTION  
**FEDERAL**



*This project was made possible by a grant from the USDA Forest Service, an equal opportunity provider, employer, and lender.*

Please visit <http://www.nmsfa.org> to view online or download a copy of the full report.

